



# Friends of the Office of State Archaeology

**Member Newsletter  
Spring 2003**

FOSA  
P. O. Box 380845  
East Hartford, CT 06138-0845  
<http://www.keegans.com/FOSA>

## PRESIDENT'S LETTER

FOSA members have been hard at work all winter on OSA projects, as you can read elsewhere in this newsletter. They continue the momentum of a stupendous effort in 2003, when almost 4000 hours of field and laboratory time were contributed, an increase of more than 100% over 2002 volunteer hours. These efforts were enhanced by a growing number of FOSA members; we now have over 110 active members, including the newest listed below.

Our biggest event this winter was the annual meeting, held again at the Glastonbury High School on February 1 and once more co-sponsored by the Archaeological Society of Connecticut. Uncertain weather, and the loss of the space shuttle that morning, probably diminished the turnout, but we still had over 100 people from FOSA, the ASC, and the general public. The business meeting outlined 2002 accomplishments, including over \$1000 spent on OSA supplies and office expenses and provision of liability insurance covering all volunteers working on OSA projects. John Spaulding's elegant Powerpoint presentation of photographs of volunteer projects graced the business meeting, at which we also re-elected directors Dreda Hendsey, Paul Scannell, and Jim Trocchi to two-year terms. As I have said many times, FOSA could not function without the remarkable work of our volunteer board, who bring us a really wide range of skills and experience.

The main attraction at the annual meeting was archaeologist Eric Deetz from the Jamestown (Virginia) Rediscovery Project. Eric wisely did not attempt to convince a room full of New Englanders that Jamestown trumps Plymouth in historical significance, but his slide-illustrated talk clearly demonstrated that Jamestown Rediscovery has found the richest, most extensive archaeological evidence of early 17<sup>th</sup>-century English settlement in this hemisphere. FOSA and the ASC are very grateful that Eric took the time to visit us that weekend.

On the OSA funding front, FOSA's committee on tapping into municipal building permit fees has drafted several versions of proposed changes in legislation needed to provide OSA office staff and equipment. We will be working with the Museum of Natural History's board of directors and with OSA-friendly legislators to present the most politically viable version of this plan, and hopefully have the funding in place by the time the OSA wing of the museum is completed under the UConn 21<sup>st</sup> Century initiative. When it comes time to roust out more legislative support, you will all be asked to become involved.

- Mike Raber

## NICK'S NEWS

The obvious big news this winter has been the Governor's proposed budget cutbacks affecting historical preservation in the state. Fortunately, OSA is under the UConn umbrella and is probably small enough to fly under the radar. However, our sister agency in historic preservation, the Connecticut Historical Commission, is being cut drastically in funding and the Governor has recommended merging it into a new super-agency which will consolidate the state Tourism Office, the Film Commission and the Commission on the Arts! Cost savings, we are told, though no actual savings plans have been presented. Also, no funding is being provided for the four museums (Prudence Crandall House in Canterbury, Henry Whitfield House in Guilford, Newgate Prison in East Granby, Sloan Museum in Kent), so that personnel and museums will close indefinitely.

With the encouragement of many legislators, the Commission is involved in developing a counter-proposal under which the present organization would retain its professional independence through a re-organization of many public and quasi-public agencies involved in cultural heritage. Details are still emerging, but in the meantime we are asking everyone to make legislative leaders and members of the rank and file aware of the importance and impact of our work. Emails, letters, etc. to your legislators encouraging support of the Historical Commission's work, and noting the losses the State will suffer were the present historic programs eliminated, would be most helpful. Please feel free to contact me at OSA for assistance and contact information if you are not sure what to say or whom to notify.

OSA had a very busy winter season - not in the field, but in the laboratory. Our volunteers and students have been working on a series of sites from last year, including the analysis of the Bulkeley family tomb, as well as the cataloguing of new archaeological collections for the CT State Museum of Natural History.

On the museum front, we are disheartened to inform you that our director, Ellen Censky, has accepted a new job as director of the Noble Museum of Natural History at the University of Oklahoma. We hate to lose her, but this is a major career step for her. We hope that her hard work to obtain a new, renovated museum and a new archaeology wing will see fulfillment in the next few years. Anyhow, though Ellen leaves UConn in May, we miss her already.

- Nick Bellantoni, Ph.D.  
State Archaeologist

## FOSA VOLUNTEERS IN THE OFFICE

There continues to be a range of volunteer activity at Nick's office during the winter season. Despite the hardships of "old man winter," work continued on the evaluation and cataloging of artifacts from the Bulkeley Crypt. Most of this work was done by graduate students, but there was some help given by FOSA volunteers in organizing and storage of the material. Work also continued in cataloging materials from the Wadsworth site as well as prehistoric artifacts donated by two private collectors.

On December 14<sup>th</sup> a training session was provided by Luci Fernandez and Paul Scannell to six FOSA members regarding the scope of activities at Nick's office, with a particular emphasis on the processing and storage of historic and prehistoric artifacts. The session was well received and may be repeated in the fall of this year.

Dave Cooke, Roger Thompson, Paul Scannell and Ken Beatrice, under the spirited supervision of "the boss," installed a number of new metal shelves in Building One. The space crunch is ongoing and is a challenge to our CEO.

*-Paul Scannell*

### NEW MEMBERS

Deborah J. Adam - Groton Long Point  
 Peter Bass - Colchester  
 Martha Davidson - Manchester  
 Bette D. Glickman - Glastonbury  
 Victoria Hart - East Hartford  
 Joan McCarthy - South Glastonbury  
 Mark Mishriky - Glastonbury  
 Cris Peck - Manchester  
 Renee Petruzelli - Bristol  
 Jeff Pudlinski - Litchfield  
 Ernie Wiegand - Wilton  
 Marlene Wilhelm & Family - Windsor

### GERSHOM BULKELEY TOMB

This past winter the cataloging and analysis of the skeletal human remains from the Gershom Bulkeley Tomb has been ongoing under Renee Petruzelli, a graduate student from the University of Alaska, Mark Macaуда, a Ph.D. graduate student at the University of Connecticut, Anthropology Department, and FOSA's Anita Sherman. Anita has her Degree in Nursing and as a Dental Assistant, and has contributed her knowledge on several OSA projects. All three specialize in osteology and have several years of experience in conducting this type of investigation.

To date, they have identified 8 children and 21 adults with more study to be done. The analysis of the skeletal remains has shown signs of diseases such as tuberculosis, and several types of arthritic conditions. Dental examinations have shown two

different techniques of repairs and the use of gold for fillings and early examples of partial bridge work.

One of the many mysteries we hope to resolve is the positive identification of Gershom Bulkeley. Several of the coffin lids presented abbreviations and dates with brass tacks, but only a few coffin plates were found. Unfortunately, none showed Gershom Bulkeley or his initials.

It is hoped that at the completion of this project all of the skeletal remains can be identified. Once the laboratory work has been completed, a reinterment will be scheduled at the Bulkeley family crypt in Colchester.

Two other FOSA members who should be recognized for their professional talents are Dave Cooke for his leadership and John Spaulding for his photographic recording during the excavation of the crypt.

*-Ken Beatrice  
 Vice President*

## MEMBERS' APPRECIATION PICNIC

The first Members' Appreciation Picnic was held on Sunday October 6, 2002 at the recently refurbished Gillette Castle State Park in East Haddam. Thanks to the work done by Ken Beatrice, FOSA members had their own picnic space at the new "Grand Central Pavilion," which offered a wonderful view over the Connecticut River.

The Sunday turned out to be a lovely day for a fall picnic with comfortable temperatures. FOSA supplied the basic picnic ingredients including the hamburgers, hot dogs and the drinks. Members contributed fruit platters, salads, potato dishes, bean dishes, etc. Members also brought cakes and cookies with the highlight being a cake decorated by Bonnie Beatrice. The icing was styled to show a number of "dig" sites with the message "Thank You Members and Volunteers." If anyone left the picnic hungry, it was not for lack of a sufficient amount and wide variety of foods.

The main purpose of the picnic was to recognize the volunteers who had assisted at either the office or at work sites during the year. Nick began the proceedings by furnishing an

*Continued on Page 3*

### VOLUNTEER!

*Members can help with:*

Office work  
 Artifact cataloguing  
 Staffing events  
 Field excavations

Contact OSA at Storrs (860) 486-5248 or e-mail

[nbell@uconnvm.uconn.edu](mailto:nbell@uconnvm.uconn.edu)

*Picnic - Continued from Page 2*

overview of the activities conducted during the prior year. Nick and Mike Raber awarded the following a Volunteer Recognition Certificate: Bruce Greene, Jack Rajotte, Sven Johnson, George Kinsella, Hank Coppes, Roger Thompson, Paul Scannell, Ken Beatrice, John Spaulding, Dick LaRose, Stanley Moroch, Anita Sherman, Bonnie Beatrice, Kathleen Kelleher, Ruth Shapleigh-Brown, Peter Bass, and Luci Fernandes. The Certificate has a unique quality inasmuch as it includes a picture of Frank Sinatra imitating Nick in one of his "Nice and Easy" moods.

Following the food and award program, attendees were free to tour the grounds of the 115-acre park and to observe the work done to date on their refurbishing of the park. Many took advantage of the guided tour through the Castle and see the work that has been done. The day was topped off for many with a walk to the Connecticut River to view the remains of William Gillette's yacht Aunt Polly. The Aunt Polly served as Gillette's temporary home (5 years) while his castle was being built. The yacht was later refitted to match the castle's interior. The yacht and dock area were destroyed by fire in 1920. Only a small portion of the remains was visible to those who ventured to take a look at Aunt Polly.

It was a great day for a picnic and for hiking through the park. Hopefully, this is only the first of a continuing series of Member Appreciation Picnics.

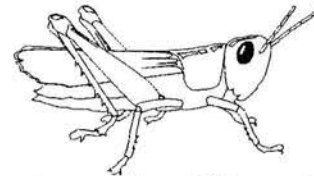
*-Roger Thompson*

**WANTED**

Does anyone have a small microwave they would be willing to donate to Nick's office? It has been hard for volunteers to heat their lunches on car dashboards this winter with the extreme cold and many cloudy days. Contact Nick's office (860-486-5248) if you have one; it will be greatly appreciated.

*-June Cooke*

**UPCOMING BIOBLITZ**



FOSA will again provide exhibits, and items such as tee shirts and Bonnie Beatrice's tie tacks, at a Museum of Natural History Bioblitz. This year's event will be held at Bates Wood Park in New London on June 7, 2003 from 10 a.m. to 3 p.m. The Bioblitz focuses on identifying all plant and animal species in an area. FOSA will stay out of the brush for a change, but present the public with an opportunity to understand some of the past behaviors of their own species, and to support FOSA efforts. For more information, contact the Museum's program coordinator, Cheri Collins, at 860-486-6793 or [mnhadm04@uconnvm.uconn.edu](mailto:mnhadm04@uconnvm.uconn.edu).

*Anita Sherman and Renee Petrucelli analyzing a specimen from the "Gershom Bukkeley Tomb."*



*Photo by Ken Beatrice*

**DEATHS**

The FOSA Board and members offer their condolences to:

The family of Richard LaRose on the loss of their daughter Jean.

The family of former member George Jackson.

**BELOW GROUND**

The following is a partial list of field work for 2003. Please note on your calendar.

**MANCHESTER, CT**

There will be three (3) digs held at the PITKIN GLASS WORKS located near the intersection of Porter & Putnam Streets in Manchester. Local school students will participate in digs on FRIDAY, MAY 2 & FRIDAY, MAY 9. A rain date of WEDNESDAY, MAY 14 is planned as a backup if needed. These digs are scheduled to begin at 9:00 AM.

The third dig at the Pitkin Glass Works will be sponsored by the Connecticut Museum of Natural History and will take place on SATURDAY, JUNE 28 from 10:00 AM until 3:00 PM.

**GLASTONBURY, CT**

Dig at the THREE HOLE PRIVY SITE located in the REAR of 1803 MAIN ST, Glastonbury. The original privy was donated to the Glastonbury Historical Society and relocated to the Welles Shipman House in South Glastonbury. Dates and times of digs here to be announced.

GLASTONBURY MIDDLE SCHOOL DIG. This dig will be held at the Morgan Site, Rocky Hill, on Thursday, OCTOBER 16 at 9:00 AM.

**CLINTON, CT**

A relatively large number of digs are anticipated, which will be primarily of a prehistoric nature, in an area near the Hammock River on the east side of Clinton harbor. Plans are in the works for dates and time schedule. Some finalization is needed from the owner. Work should start early in April. This is a BIG PROJECT.

Other possible project areas are East Lyme, Farmington, Milford, Coventry, Lebanon and Guilford.

All in all, it appears that we will have a full season of work in the field. Keep your trowels sharp and don't forget your bug spray!!

- Dave Cooke

**MEETINGS**

*The Society for Pennsylvania Archaeology, Inc.* - May 9-11, 2003 at Ramada Inn, State College, PA. Additional information: [ <http://www.shol.com/spa20/spahone/SPANews/callpapers2003.html> ]

*New York State Archaeological Association* - Queensbury Hotel, Glens Falls, NY - April 25, 26, 27 More info: [ <http://www.siftings.com/nysaa.html> ]

For Archaeology meetings in the Northeast log on to [www.siftings.com/asc.html](http://www.siftings.com/asc.html). [Roger Moeller]

**NEWSLETTER PRODUCTION**

*Editors: Mae Johnson, June Cooke, and Mike Raber*

*Layout: Kristen N. Keegan*



**Budget Target:  
Henry Whitfield State Museum  
See "Nick's News," page 1**



<http://www.hbgraphics.com/whitfieldmuseum/>

**CONTENTS**

President's Letter .....	1
Nick's News .....	1
Gershom Bulkeley Tomb .....	2
Welcome New Members .....	2
Members' Appreciation Picnic .....	2
Wanted .....	3
Upcoming BioBlitz .....	3
Deaths .....	4
Below Ground .....	4
Meetings .....	4

