

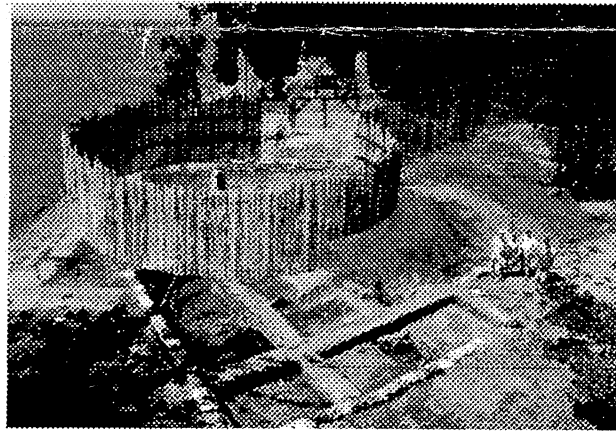
ANNUAL MEETING
FRIENDS OF THE OFFICE OF STATE ARCHAEOLOGY, INC.
SATURDAY, FEBRUARY 1, 2003
Glastonbury High School Auditorium
330 Hubbard Street, Glastonbury, Connecticut

1:00 WELCOME, BUSINESS MEETING, NOMINATION AND ELECTION OF DIRECTORS

1:45 SPEAKER: ERIC DEETZ, STAFF ARCHAEOLOGIST, JAMESTOWN REDISCOVERY PROJECT, ASSOCIATION FOR THE PRESERVATION OF VIRGINIA ANTIQUITIES

“James Fort 1607: The Archaeology of the Early English Colonial Fort.”

Nine seasons of excavations at James Fort once thought to have eroded into the James River have provided Archaeologists and Historians new insights into early colonial life in Virginia. Research is changing the way scholars think about the early colonists as well as their interactions with the local Algonquin peoples. Learn about the fascinating finds this summer.



FOSA is pleased to co-sponsor this event with the Archaeological Society of Connecticut. All current, paid-up members of either organization will be admitted without cost, including families with family memberships. A \$5.00 donation is requested from all other attendees. FOSA tee shirts will be offered for \$12.00.

BAD WEATHER ARRANGEMENTS: If weather requires cancellation, FOSA will post notices on WTIC (AM 1080) and on Channel 3 by 10 AM. If in doubt or unable to reach these sources, contact June Cooke (860/529-7139/ email junebug632@webtv.net), Mike Raber (860/633-9026), or Gary Nolf (860/399-5402).

RAIN/SNOW DATE: SUNDAY, FEBRUARY 2, 2003.

DIRECTIONS TO GLASTONBURY HIGH SCHOOL:

From 91 South & 91 North:

1. Take exit 25N (Putnam Bridge-Glastonbury Rte 3) follow to right onto Route 2East/Norwich
2. Move to left lane immediately, take Exit 7 (left fork in road) for Rte 17/Portland
3. Take a second left fork (about 3/4 mile), sign says E.Glastonbury/New London Tnpke; follow to New London Turnpike.
4. Continue past first traffic light. Directly before 2nd traffic light, on your right will be a green Hubbard Street sign & a ramp.
5. Turn right onto the ramp and Hubbard Street. Glastonbury High School is on your left after a few houses. Enter via 2nd or 3rd driveways. Follow posted signs for entrances leading to auditorium

From 84 East, 84 West, or Rte 2 East: Take Route 2 East to exit 7 (left fork in road); follow steps 3-5 in directions above.

From Route 2 West:

1. Take Exit 10 (Manchester), turn left at exit stop sign, going over highway.
2. Turn right at next stop sign onto New London Turnpike
3. Proceed through 1st traffic light. Continue 2.5 miles to 2nd traffic light; turn left onto Hubbard St.
4. Glastonbury High School is on your left after a few houses. Enter via 2nd or 3rd driveways. Follow posted signs for entrances leading to auditorium.

Captain John Smith

JAMES FORT 1607

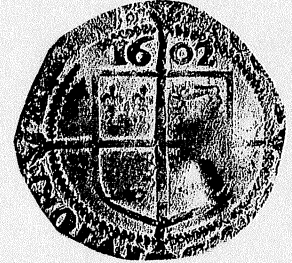


To Smith.

THE ARCHAEOLOGY OF THE FIRST
ENGLISH SETTLEMENT

PRESENTED BY

ERIC DEETZ



STAFF ARCHAEOLOGIST FOR THE ASSOCIATION
FOR THE PRESERVATION OF VIRGINIA ANTIQUITIES

FEBRUARY 1, 2003

(STORM DATE : FEBRUARY 2, 2003)

(In event of bad weather tune to WFSB Ch 3 for postponement announcement)

GLASTONBURY HIGH SCHOOL
@ 1:45 P.M. \$ 5.00 DONATION

(NON-MEMBERS)



SPONSORED BY : FRIENDS OF THE OFFICE OF STATE
ARCHAEOLOGY AND THE ARCHAEOLOGICAL SOCIETY OF
CONNECTICUT

FOR FURTHER INFORMATION CALL 860.529.7139